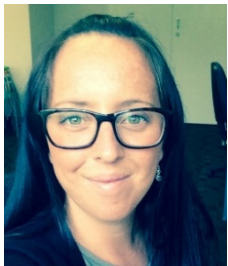


# EASY-ENGLISH INVITATION

## To be part of a research project



We want to ask young people between the ages of 15 and 24 what it is like to get help to make decisions when you don't have a lot of people in your life.



The researcher is Danielle Notara.

She is a student at Southern Cross University in Lismore.



Danielle would like to interview you about how you get support to make decisions.

You will get an \$80 gift voucher at the end of the research



There are lots of different ways you can be interviewed:

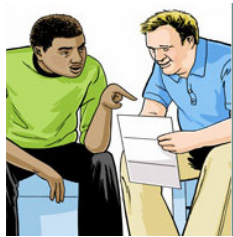
- talking
- drawing
- taking photos
- or even going for a walk.

# EASY-ENGLISH INVITATION

## To be part of a research project



If you want to know more about this research tell the person who gave you this invite.



They will tell Danielle you are interested in being in the research.

Danielle's phone number is 02 6620 3802 and her email is [danielle.notara@scu.edu.au](mailto:danielle.notara@scu.edu.au)



Danielle will visit you and talk with you about the project.



Then you can decide if you want to sign up to be part of the research. You can say yes or no, it's up to you.